

# Z

## Zubehör Accessories



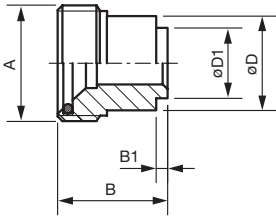
### Schweißnippel für Kugeldrehgelenke Adapter for Ball Joints/Weld-on

Typ Type	Abmessungen / Dimensions (mm)						Material				Gewicht Weight
	A	B	B1	D	D1		1.4571 SS316				ca. g
16BSN	M20 x 1	21,0	3,0	16,0	13,0		●				20
20BSN	M24 x 1,5	21,0	4,0	20,0	15,0		●				25
30BSN	M36 x 2	36,0	4,0	22,0	15,0		●				120
40BSN	M45 x 2	40,0	4,0	22,0	18,0		●				205

**Gewinde:** M20 x 1      M24 x 1,5      M36 x 2      M45 x 2  
**Thread:** M20 x 1      M24 x 1,5      M36 x 2      M45 x 2

**Bestell-Beispiel:**      Typ                      Material  
**Ordering Information:**      Type                      Material

16 BSN      -      1.4571



### Klappschellen / Hinged Clamps

Typ Type	Abmessungen / Dimensions (mm)								Material			Gewicht Weight
	Rohr Ø Pipe Ø	D	Z	B	A	L	L1	H	PA			ca. g
D40246-3/4	3/4"	25,0-28,0	7,6	5,0	55,0	60,0	40,0	25,0	●			26
D40246-1	1"	32,0-34,5	10,7	7,0	62,0	68,0	45,0	25,0	●			32

Weitere Größen auf Anfrage.  
Other Sizes on request.

**Gewinde:** G 3/8"  
**Thread:** 3/8" BSPP

**Bestell-Beispiel:**      Typ                      Material  
**Ordering Information:**      Type                      Material

D40246-3/4 -      PA

