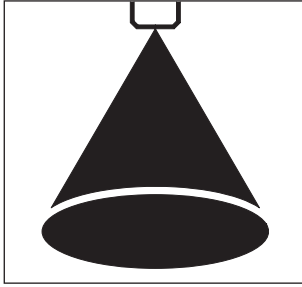


VK 3 1/2" + 4"

Vollkreisdüsen Full Cone Nozzles

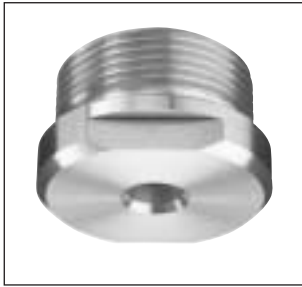


Anwendungen

- Wasch- und Reinigungsprozesse
- Kühlen von Luft, Gas und Feststoffen
- Flächenberieselung

Applications

- Washing and Rinsing
- Air, Gas and Parts Cooling
- Irrigation



Volumenstromtabelle / Capacity VK - 3 1/2"

Düsen- typ Nozzle Type	Durchfluss l/min Capacity l/min						Engster Querschnitt / Max. Free Passage (mm) bei Spritzwinkel* / at Spray Angle*			
	0,5 bar	1,0 bar	2,0 bar	3,0 bar	5,0 bar	10,0 bar	45°	60°	90°	120°
VK-1260	398,0	563,0	796,0	975,0	1.260,0	1.780,0	10,0	12,0	14,0	12,0
VK-1580	500,0	707,0	1.000,0	1.225,0	1.580,0	2.236,0	13,0	13,0	16,0	13,0

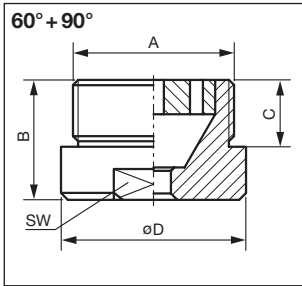
* = bei / at 2 bar

Material: Ms 1.4305 1.4571 PVDF PVC PP
Material: Brass SS303 SS316 PVDF PVC Polypropylene

Gewinde: G 3 1/2"
Thread: 3 1/2" BSPP

Bestell-Beispiel: Düsentyp - Spritzwinkel - Gewinde - Material
Ordering Information: Nozzle Type - Spray Angle - Thread - Material

VK-1260 - 120° - G 3 1/2 - 1.4571



Abmessungen (mm) 60°+ 90° Dimensions (mm) 60°+ 90°					Gewicht Weight kg
A	D	B	C	SW	
3 1/2"	118	70	32	104	4,0
4"	128	90	36	110	6,2



Volumenstromtabelle / Capacity VK - 4"

Düsen- typ Nozzle Type	Durchfluss l/min Capacity l/min						Engster Querschnitt / Max. Free Passage (mm) bei Spritzwinkel* / at Spray Angle*			
	0,5 bar	1,0 bar	2,0 bar	3,0 bar	5,0 bar	10,0 bar	45°	60°	90°	120°
VK-1580	500,0	707,0	1.000,0	1.225,0	1.580,0	2.236,0	13,0	13,0	16,0	13,0
VK-2000	632,0	894,0	1.264,0	1.548,0	2.000,0	2.827,0	14,0	15,0	16,0	14,0

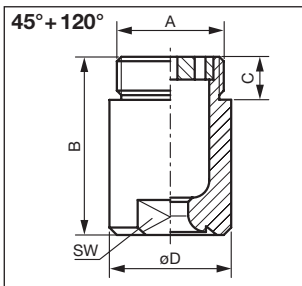
* = bei / at 2 bar

Material: Ms 1.4305 1.4571 PVDF PVC PP
Material: Brass SS303 SS316 PVDF PVC Polypropylene

Gewinde: G 4"
Thread: 4" BSPP

Bestell-Beispiel: Düsentyp - Spritzwinkel - Gewinde - Material
Ordering Information: Nozzle Type - Spray Angle - Thread - Material

VK-2000 - 120° - G 4 - 1.4571



Abmessungen (mm) 45°+ 120° Dimensions (mm) 45°+ 120°					Gewicht Weight kg
A	D	B	C	SW	
3 1/2"	118	156	32	105	8,2
4"	128	165	36	110	10,0

Zubehör Seiten 8.01 - 8.10 / Accessories pages 8.01 - 8.10