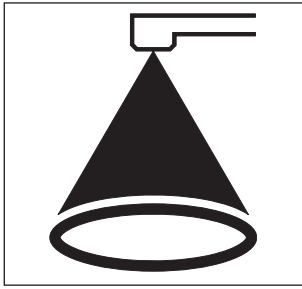


ZF DN 80 + 100

Hohlkreisdüsen Tangential Hollow Cone Nozzles Whirl Types

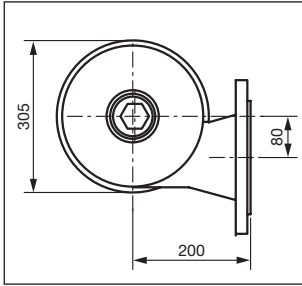
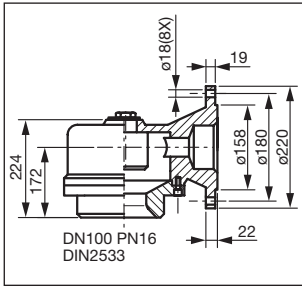
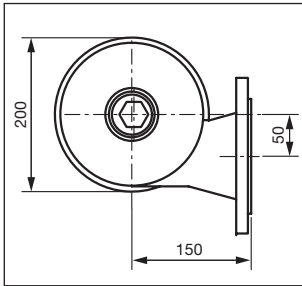
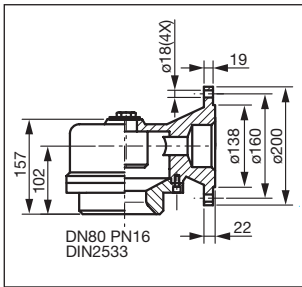


Anwendungen

- Luft- und Gasreinigung
- Luft- und Gaskühlung

Applications

- Air and Gas Cleaning
- Air and Gas Cooling



Volumenstromtabelle / Capacity ZF - DN 80

Düsen- typ Nozzle Type	Durchfluss l/min Capacity l/min						130° Spritzwinkel bei 2 bar 130° Spray Angle at 2 bar	
	0,5 bar	1,0 bar	2,0 bar	3,0 bar	5,0 bar	10,0 bar	Austrittsbohrung Orifice Diam. (mm)	Engster Querschnitt Max. Free Passage (mm)
ZF- 800	253,0	358,0	506,0	620,0	800,0	1.132,0	90,0	31,0
ZF- 880	279,0	394,0	557,0	682,0	880,0	1.246,0	90,0	34,0
ZF-1000	316,0	447,0	632,0	774,0	1.000,0	1.414,0	90,0	36,5
ZF-1150	363,0	514,0	727,0	890,0	1.150,0	1.625,0	90,0	39,5
ZF-1260	398,0	563,0	796,0	975,0	1.260,0	1.780,0	90,0	40,0
ZF-1400	443,0	626,0	885,0	1.084,0	1.400,0	1.980,0	90,0	43,0
ZF-1500	500,0	707,0	1.000,0	1.225,0	1.580,0	2.236,0	90,0	50,0
ZF-2000	632,0	894,0	1.264,0	1.584,0	2.000,0	2.827,0	90,0	57,0

Material: Grauguss 0.6015 **Anschluss:** Flansch DN 80 - DIN 2533
Material: Cast Iron 0.6015 **Connection:** Flange DN 80 - DIN 2533

Bestell-Beispiel: Düsentyp - Spritzwinkel - Anschluss - Material
Ordering Information: Nozzle Type - Spray Angle - Connection - Material

ZF-800 - 130° - DN 80 - 0.6015

Volumenstromtabelle / Capacity ZF - DN 100

Düsen- typ Nozzle Type	Durchfluss l/min Capacity l/min						130° Spritzwinkel bei 2 bar 130° Spray Angle at 2 bar	
	0,5 bar	1,0 bar	2,0 bar	3,0 bar	5,0 bar	10,0 bar	Austrittsbohrung Orifice Diam. (mm)	Engster Querschnitt Max. Free Passage (mm)
ZF-2500	791,0	1.118,0	1.581,0	1.936,0	2.500,0	3.536,0	145,0	60,0
ZF-3200	1.012,0	1.431,0	2.024,0	2.479,0	3.200,0	4.525,0	145,0	70,0
ZF-4000	1.265,0	1.789,0	2.530,0	3.098,0	4.000,0	5.657,0	145,0	79,0
ZF-5000	1.581,0	2.236,0	3.162,0	3.873,0	5.000,0	7.071,0	145,0	87,0

Material: Grauguss 0.6015 **Anschluss:** Flansch DN 100 - DIN 2533
Material: Cast Iron 0.6015 **Connection:** Flange DN 100 - DIN 2533

Bestell-Beispiel: Düsentyp - Spritzwinkel - Anschluss - Material
Ordering Information: Nozzle Type - Spray Angle - Connection - Material

ZF-2500 - 130° - DN 100 - 0.6015

Zubehör Seiten 8.01 - 8.10 / Accessories pages 8.01 - 8.10